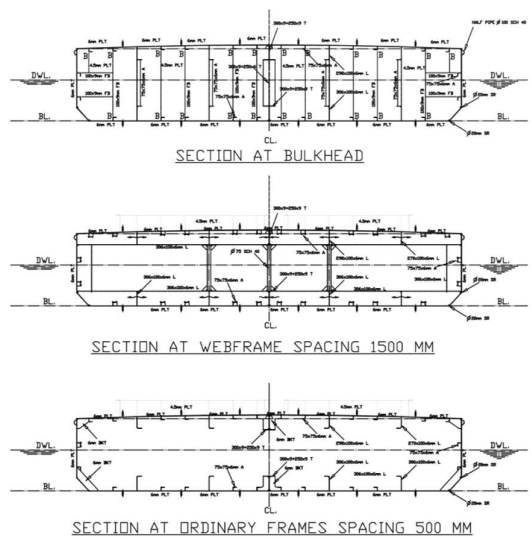
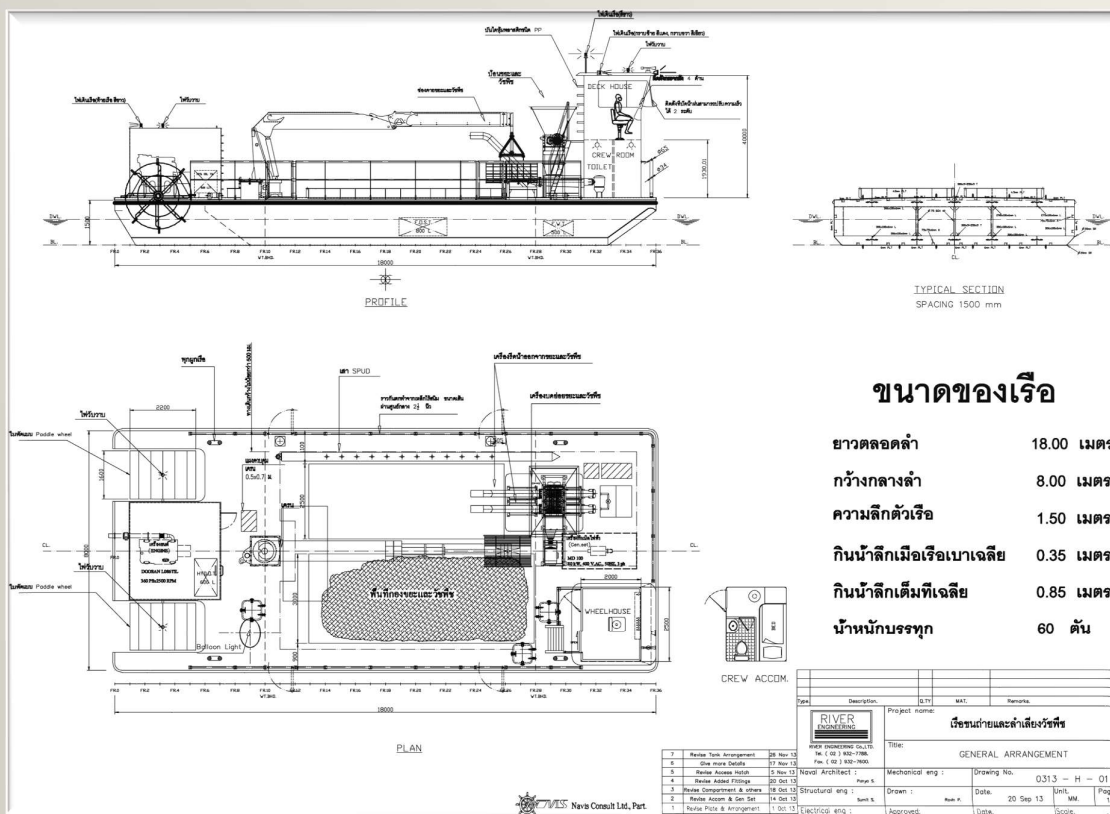
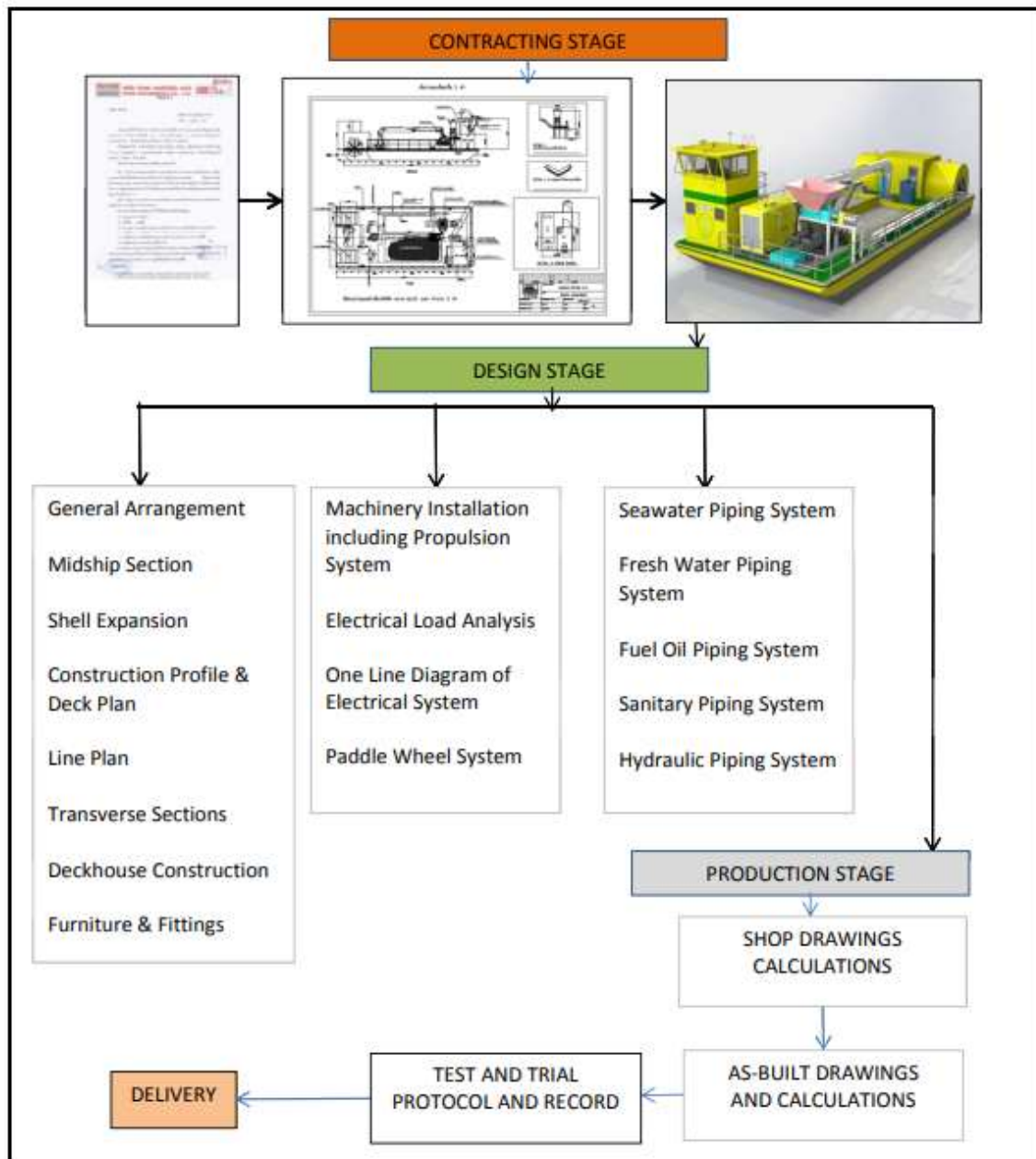


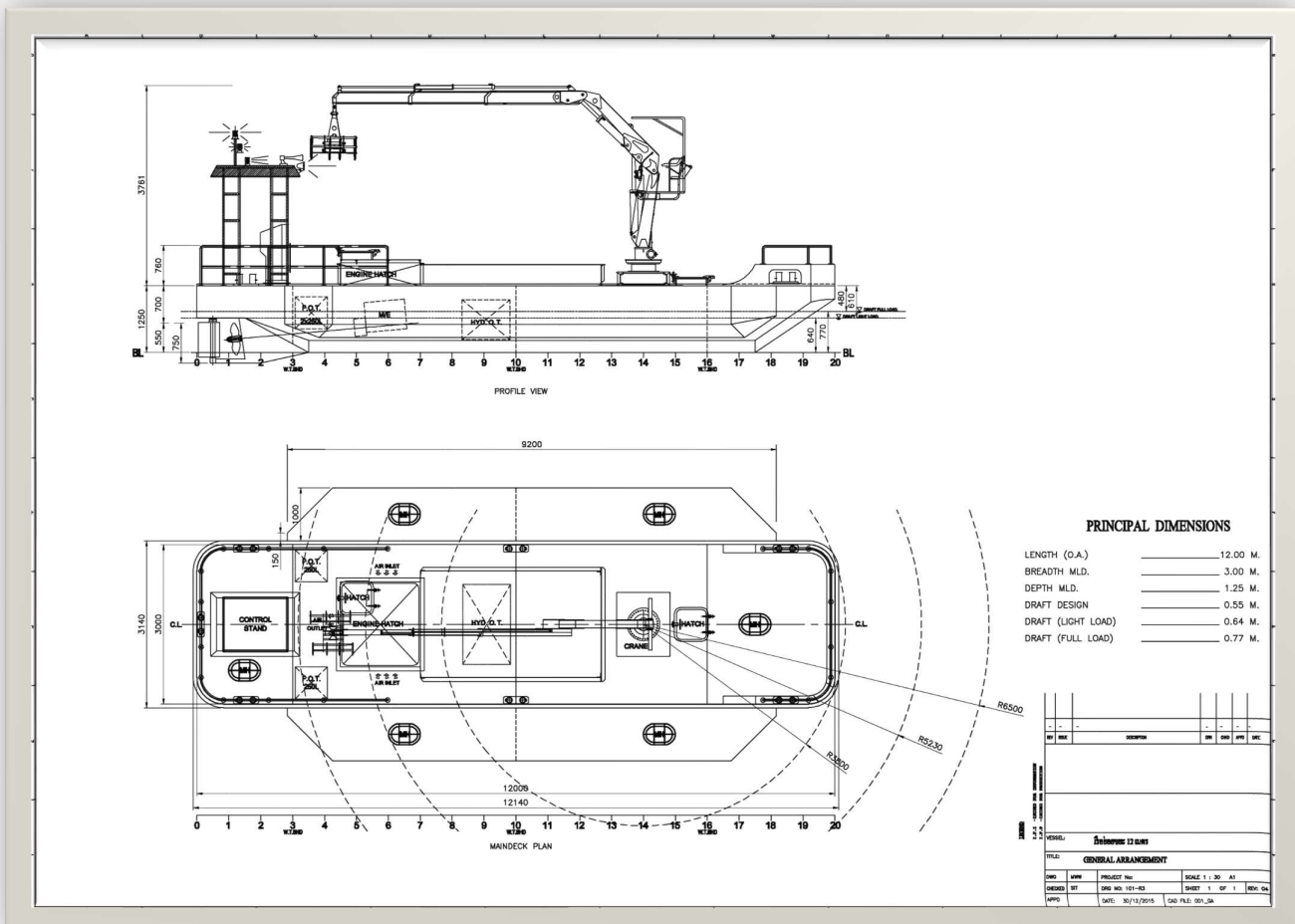
Three Weed and Garbage Collector Vessels were designed and supervised by NAVIS CONSULT for Bangkok Metropolis in 2013. The vessels were built in Thailand. The hull and machineries are carefully designed to suit the working area and condition in heavily polluted rivers. The propulsion system is paddle wheel type which can solve the maneuvering system in confined space. The size of the vessel is 18.00 m long, 8.00 m wide and 1.50 m deep. The carrying capacity of each vessel is 60 ton. The main propulsion engine power is 360 BHP, The generator / auxiliary engine power is 80 KW. Each vessel is fitted with suitable hydraulic crane and garbage grinding machine.







WORK FLOW



The flow thruster boats are used for draining flood water in various flooded area. NAVIS designed and supervised the construction of the boats. The typical size of the boat is 8.00 m long, 2.80 m wide and 1.016 m deep. The installed engine power is 48 KW @ 1500 RPM.



โครงการออกแบบต่อสร้างเรือผลักดันน้ำ

ตัวอย่างเรือผลักดันน้ำที่ได้ต่อสร้าง



การทดสอบการทำงานของเรือผลักดันน้ำ

อุปกรณ์และเครื่องจักรที่ติดตั้ง



Navis Consult Ltd., Part.

Two Dredge Tender Vessels were designed by NAVIS CONSULT for Marine Department, Ministry of Transport in 1999. The vessels were built in Thailand. The hull and machineries are carefully designed to suit the working condition in coastal area. The size of the vessel is 18.00 m long, 6.20 m wide and 2.17 m deep. The hydraulic crane fitted at the bow has 3 ton lifting capacity. The main propulsion engine power is 2x 500 BHP, The generator / auxiliary engine power is 50 KW. The vessels are fitted with suitable pushing knees and suitable for operation in confined water. The free running speed is 8 – 10 knots.

