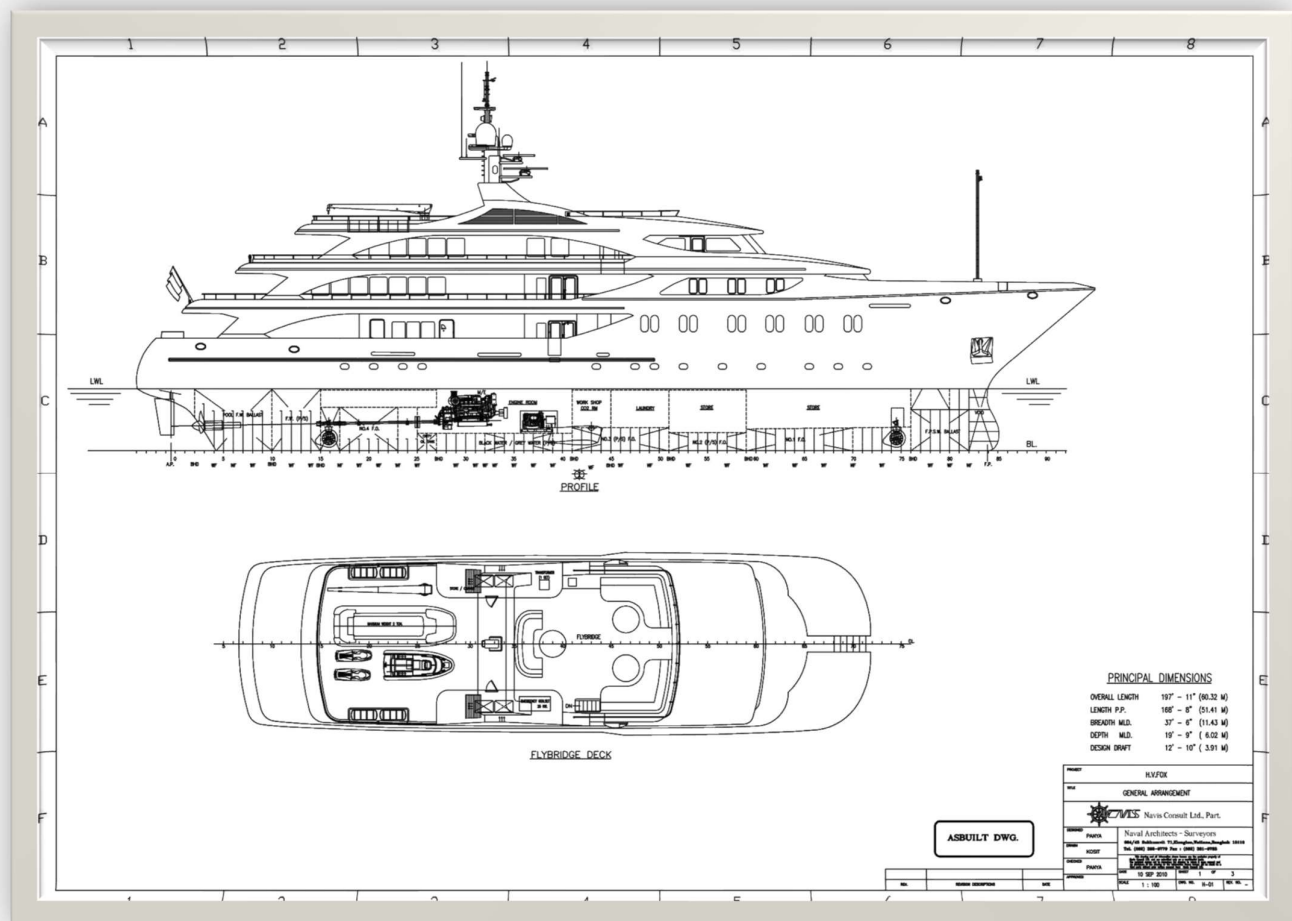
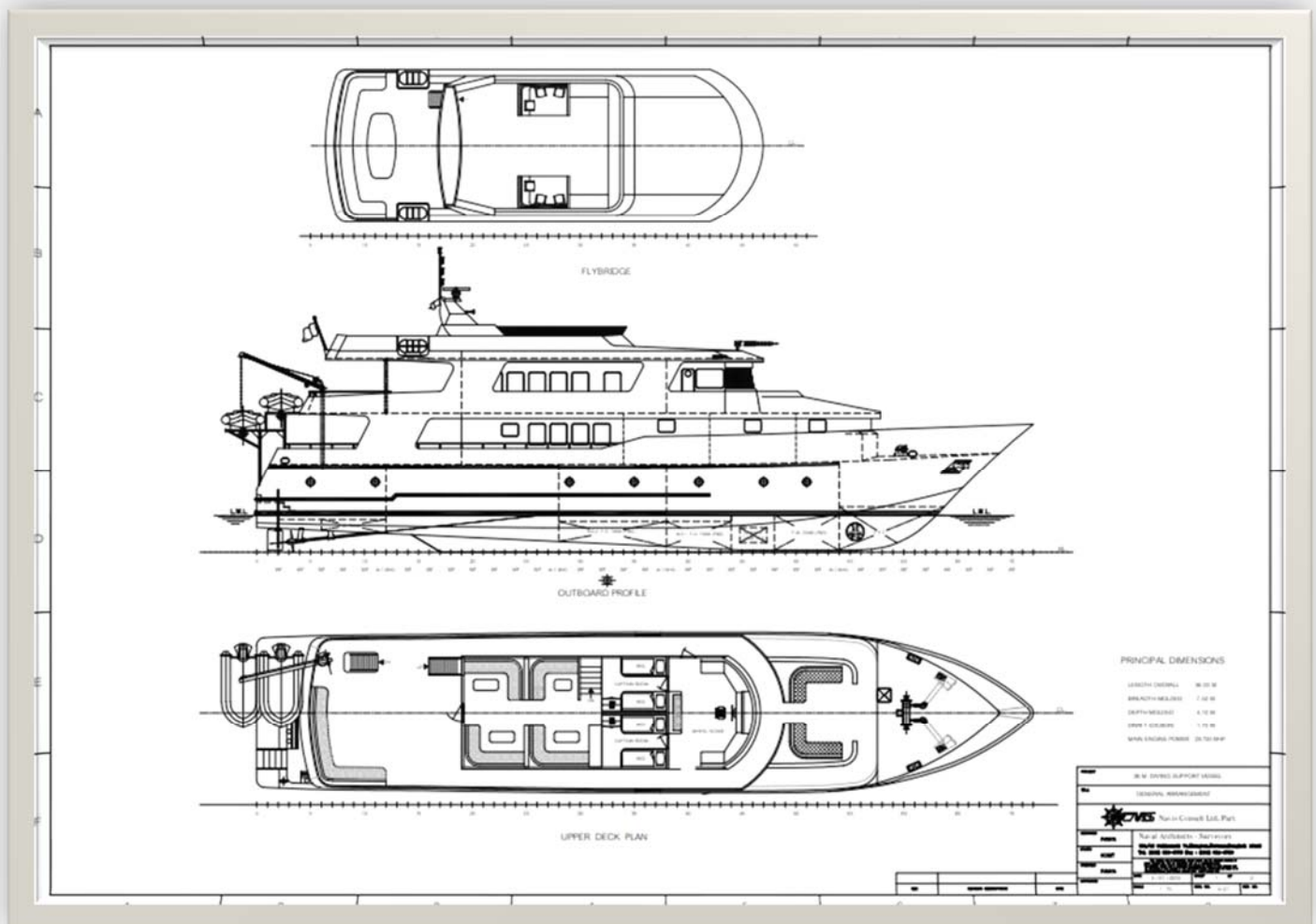


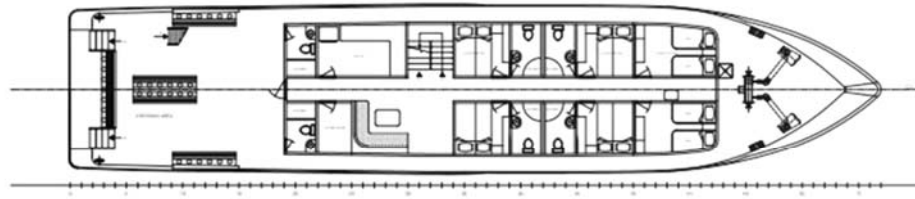
This superyacht "M.Y. TOY HEAVEN ex M.V. FOX" was refitted in 2010 in Mits Decisions Co., Ltd. in Thailand under Navis Consult design and supervision. The yacht has 5 decks with owner suite, guest cabins, crew cabins, dining lounges, cinema room, fitness center, swimming pool, etc. All spaces are fully equipped with first-class furniture and fitting. The yacht size is 60.32 m long, 14.43 m wide and 6.02 m deep. The main engine power is 2x1175 kW. The main generator power is 2x175 kW / 380V / 50 HZ. Operating speed 12 knots



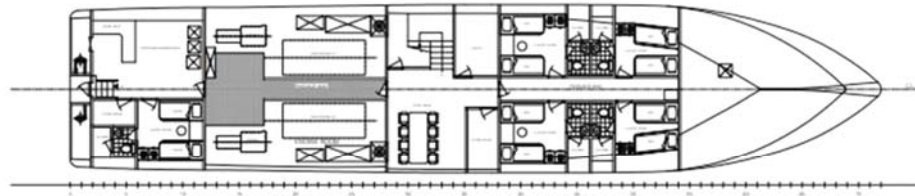


This yacht / diving support craft "WHITE MANTA" was built in a shipyard in Phuket, Thailand under Navis Consult design and supervision. The yacht has 4 decks with owner suite, guest cabins, crew cabins, etc. All spaces are fully equipped with first-class furniture and fitting including diving gears. The yacht size is 36.00 m long, 7.50 m wide and 4.10 m deep. The main engine power is 2x522 kW. The main generator power is 2x175 kW / 380V / 50 HZ. Operating speed 12 knots.

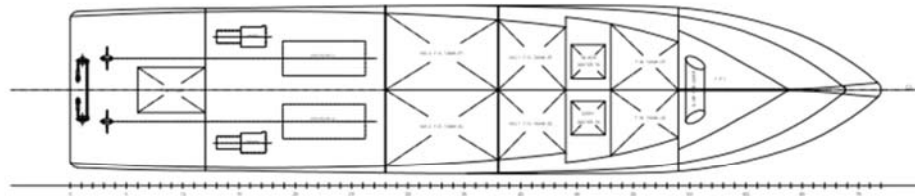




MAIN DECK PLAN



LOWER DECK PLAN



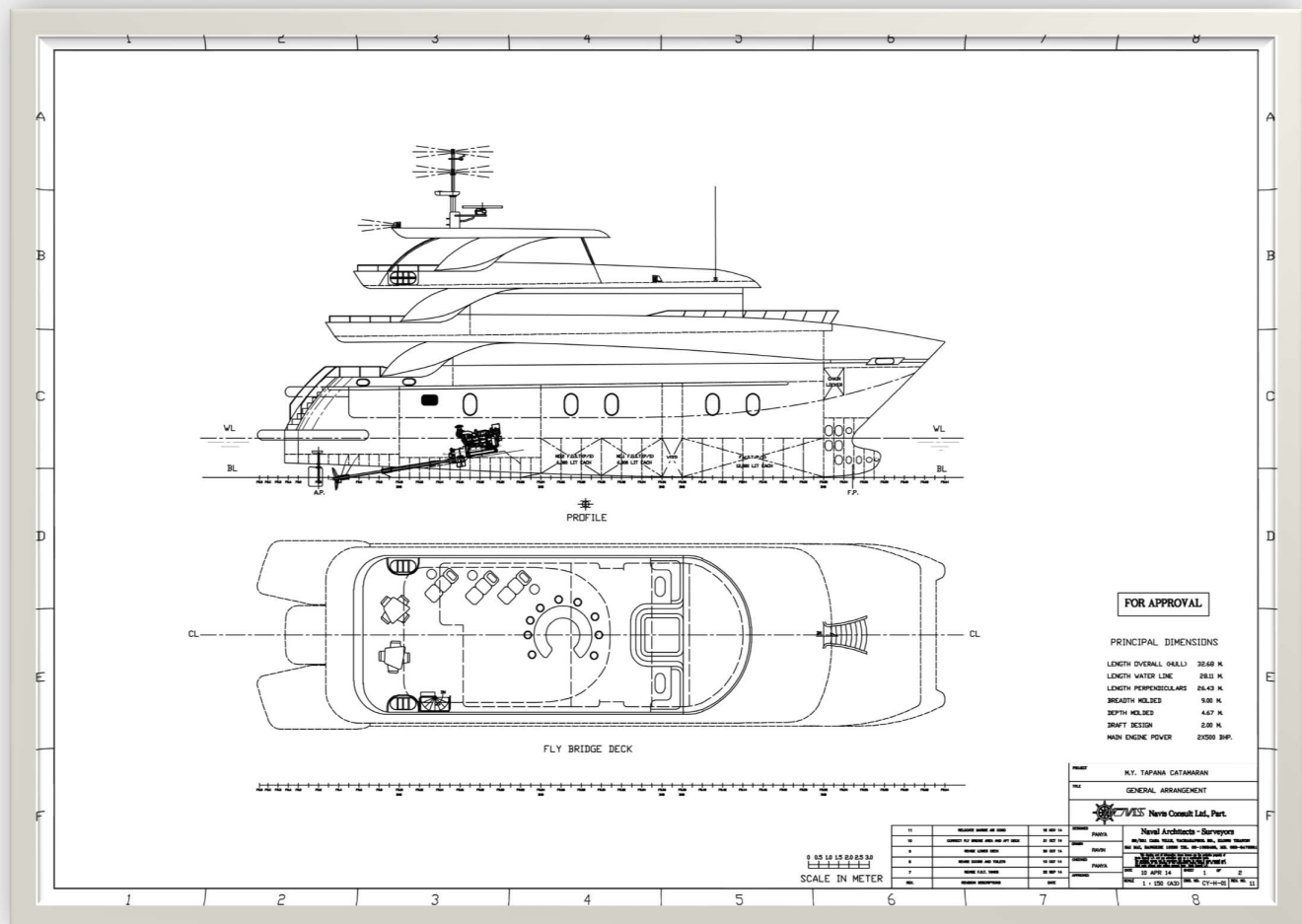
BOTTOM PLAN

PRINCIPAL DIMENSIONS

LENGTH OVERALL 36.00 M
 BREADTH MAXIMUM 7.40 M
 DEPTH MAXIMUM 3.70 M
 DRAUGHT MAXIMUM 1.70 M
 MAX. CARGO TONNAGE 20 700 DWT

NAME	MS "SARAJEVO" (CAPTAIN'S CABIN)
TYPE	GENERAL CARGO SHIP
DESIGNER	CHS - Naval Architects - Sarajevo
DATE	10.10.2010
SCALE	1:100
PROJECT	MS "SARAJEVO" (CAPTAIN'S CABIN)
NO.	10.10.2010
DATE	10.10.2010
SCALE	1:100

A collage of eight images showing various aspects of the Thai Navy Foundation's operations. The images include: a modern interior space with a curved staircase; a large white ship with 'THAI NAVY FOUNDATION' written on its side; a large white ship with 'มูลนิธิไทยสมุทร' (Thai Navy Foundation) written on its side; a large white ship with 'มูลนิธิไทยสมุทร' (Thai Navy Foundation) written on its side; a large white ship with 'มูลนิธิไทยสมุทร' (Thai Navy Foundation) written on its side; a large white ship with 'มูลนิธิไทยสมุทร' (Thai Navy Foundation) written on its side; a large white ship with 'มูลนิธิไทยสมุทร' (Thai Navy Foundation) written on its side; and a large white ship with 'มูลนิธิไทยสมุทร' (Thai Navy Foundation) written on its side.



This catamaran yacht / diving support craft was designed by Navis Consult in 2007. The yacht has 3 decks with owner cabin, guest cabins, crew cabins, etc. All spaces are fully equipped with first-class furniture and fitting including stern diving platform for divers and diving gears. The yacht size is 21.90 m long, 7.50 m wide and 3.00 m deep. The main engine power is 2x450 BHP. The main generator power is 2x40 kW / 380V / 50 HZ. Operating speed 10 - 12 knots.

